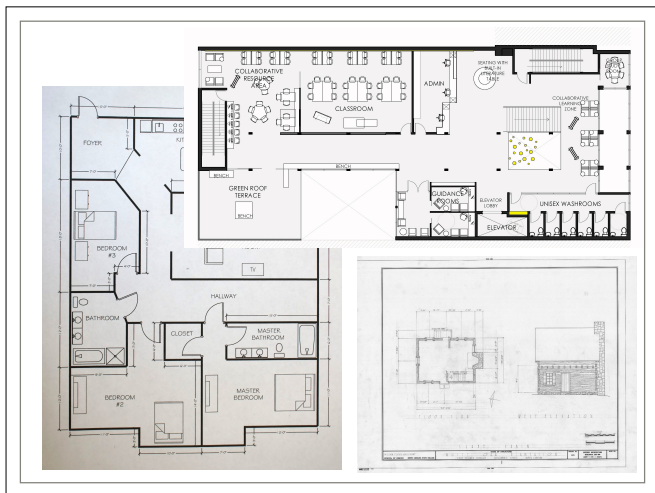




1

Students need:

- Research (20 imgs)
- Idea generation (10 ideas, 5 of each)
- Graph paper
- Pencils



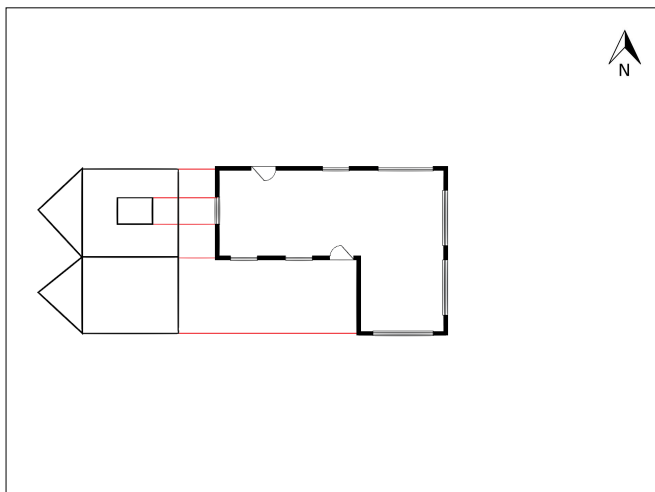
2

FLOOR PLANS & ELEVATIONS

- Floor plans are the view from above, whilst elevations refer to views of the side or facade.
- Like orthogonal drawings are used for products, floor plans and elevations are used for buildings.
- Still use projection lines to draw elevations.
- Need a north arrow, top right corner most commonly.
- Use a scale, usually 1:100

3

Discuss scale - we'll use the graph paper, 1 cube = 1m
 If I'm in the house facing north - the wall I'm looking at is the North Elevation.
 Students can refer to Technical Drawing Handbook.

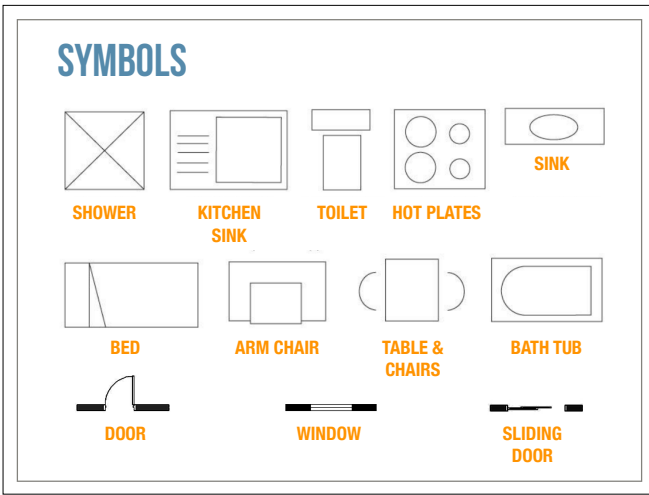


4

Start with projection lines
 If the information isn't provided, choose the height of the walls and windows.
 Choose the pitch of your roof.
 Consistent spacing between elevation views

5

Doors, show which direction they open.



6

DRAWING YOUR FINAL FLOORPLAN

- Internal walls are 1mm thick
- External walls are 3mm thick
- Don't forget your doors and windows.
- Don't forget your north arrow.
- Use graph paper
- Make sure you've met all the requirements of the brief.
 - Refer to your worksheet



7

REFERENCES

- http://www.transum.org/software/Online_Exercise/ScaleDrawing/Images/Room3.PNG
- <http://3.bp.blogspot.com/-CGUKIVH3Rg/UN9WLUJXkUI/AAAAAAAAACsw/SDj0Eb3-TM8/s1600/Apartment.JPG>
- https://d.lib.ncsu.edu/adore-djato/ka/resolver?ft_id=hh003701701&svc_level=5&svc_id=info%3Aalan-repo%2Fsvc%2FgetRegion&svc_val_fmt=info%3Aofi%2Ffmt%3Akev%3Amtx%3Ajpeg2000&url_ver=Z39.88-2004
- http://www.ycaa.vic.edu.au/documents/vce/visualcomm/technical_drawing_specifications.pdf
- https://cdn.tutsplus.com/cg/uploads/legacy/346_Blender_Floor_Plan/1.jpg
- http://3.bp.blogspot.com/-EKuJUgteIFQ/UXtkBqamxyI/AAAAAAAAAKoM/min81XtdD9U/s1600/floor_plan_example.png
- <http://images.lib.ncsu.edu/uap/Size3/NCsU/IR-102-NA/10269/bh021713702.jpg>
- <https://d1uwxqmc28f1.cloudfront.net/tes/resources/608899275dc820c-332a-491e-97bc-0f2a8bec0178/image?width=435&height=300&version=1410335159000>
- http://s3images.coroflot.com/user_files/individual_files/original_433383_axY_a1RQIAFOUtwp4XgyjUCV1.jpg
- http://s3images.coroflot.com/user_files/individual_files/original_433383_sM7iKJhxgzmicab1c0h7SauHo.jpg
- <http://urbanist.typepad.com/.a/6a00d88454714d69e2016300b32905970d-120wj>